

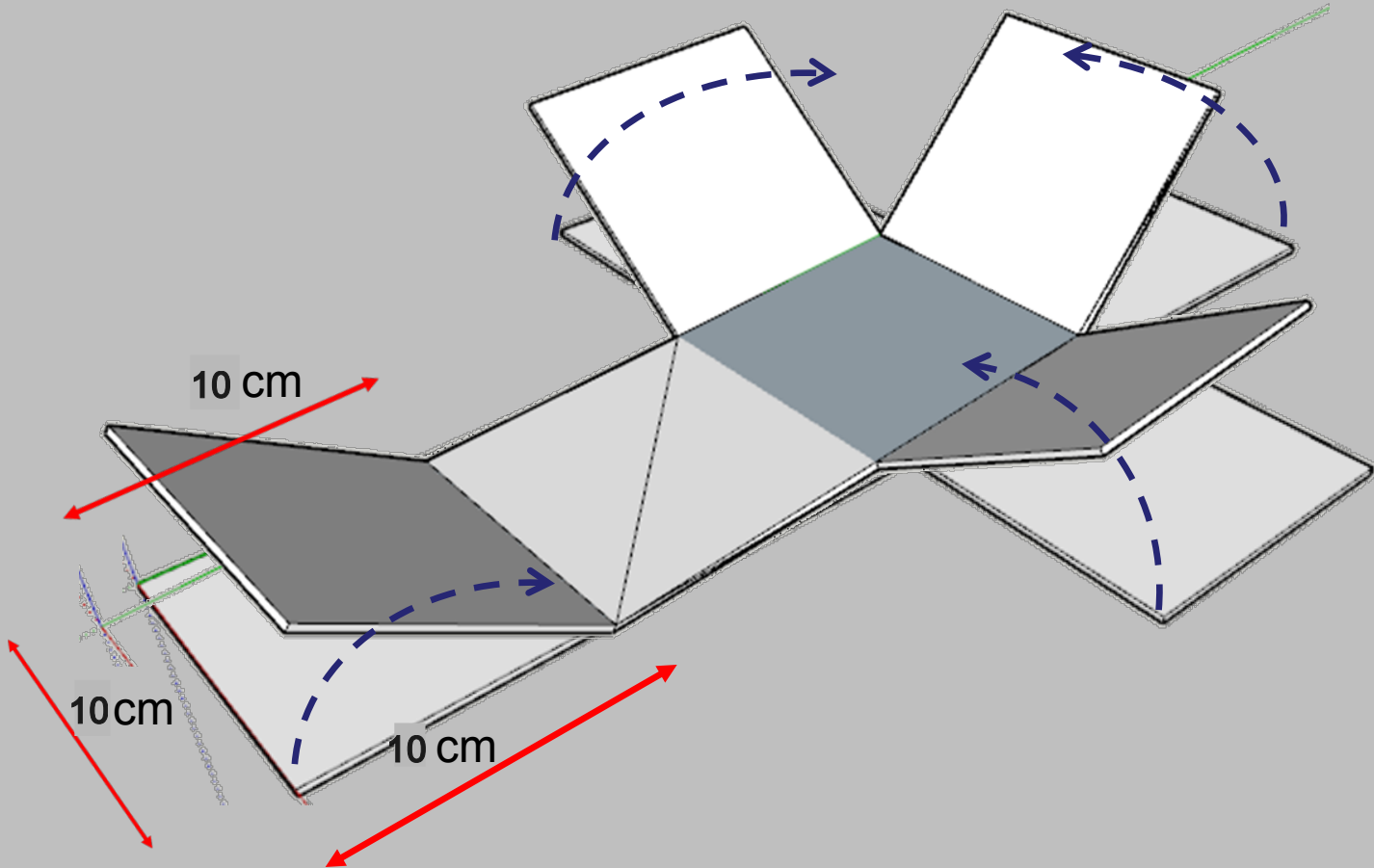
INICIO DE LA ACTIVIDAD N°1:

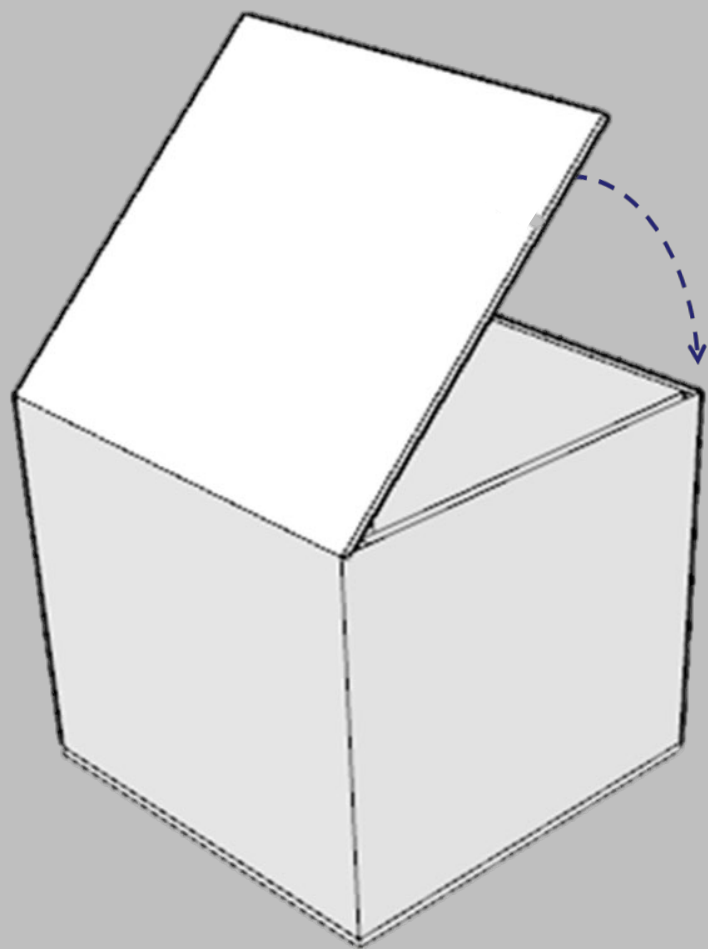
1- ARMADO DEL CUBO

2-TRANSFORMACIÓN

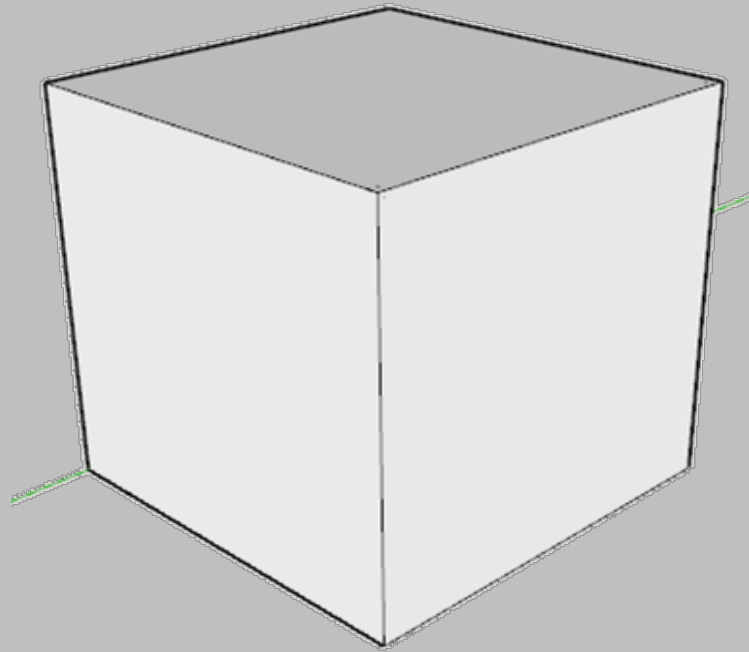
1-ARMADO del CUBO

1-ARMADO del CUBO



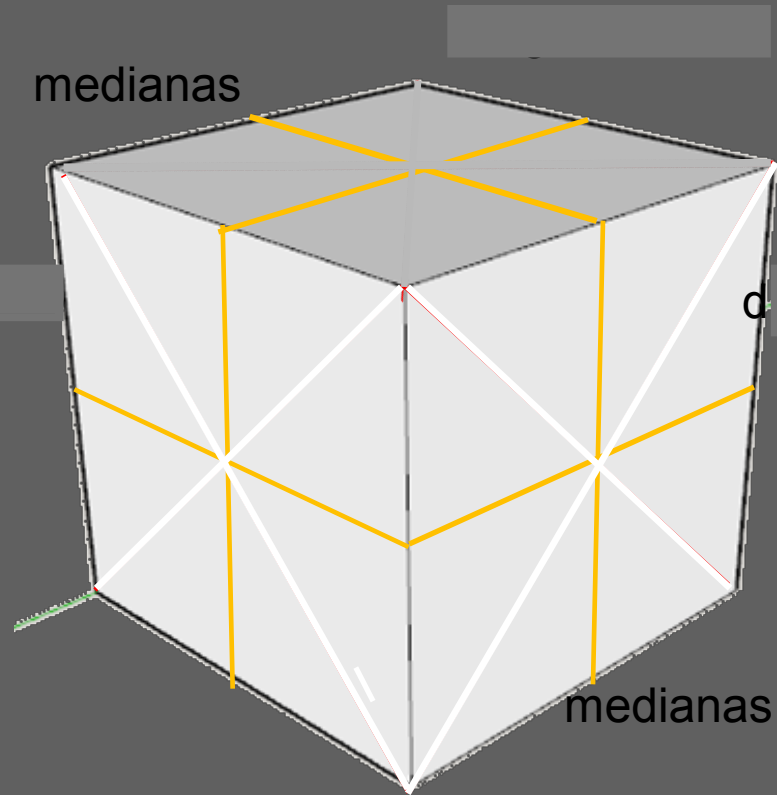


1-EI CUBO

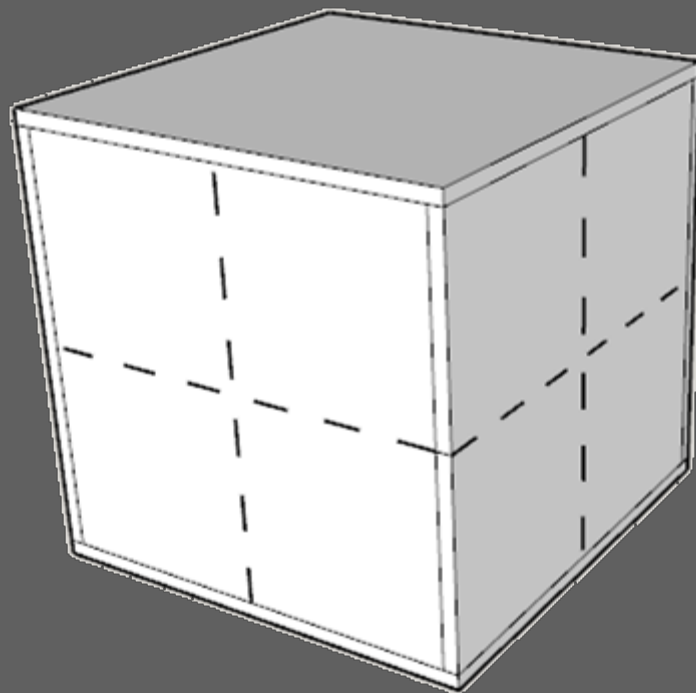


2-TRANSFORMACION

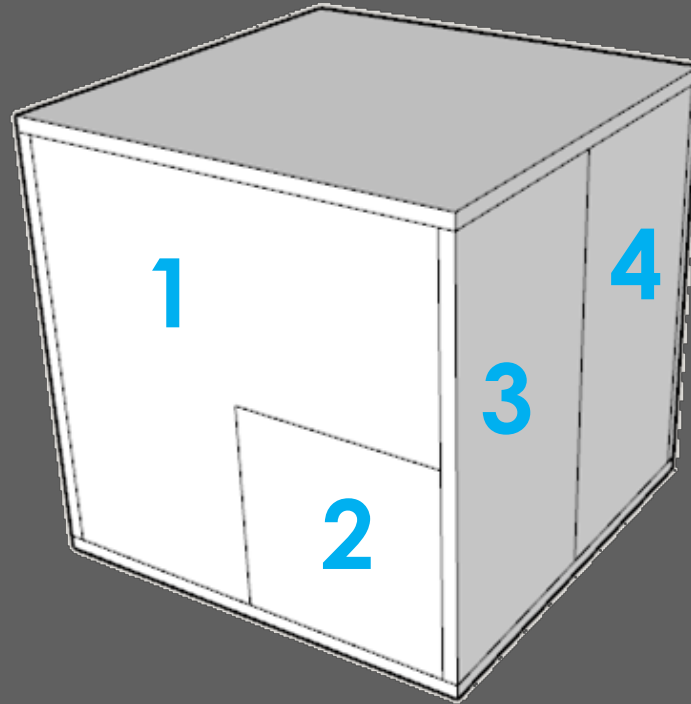
TRAZAR LINEAS PRINCIPALES



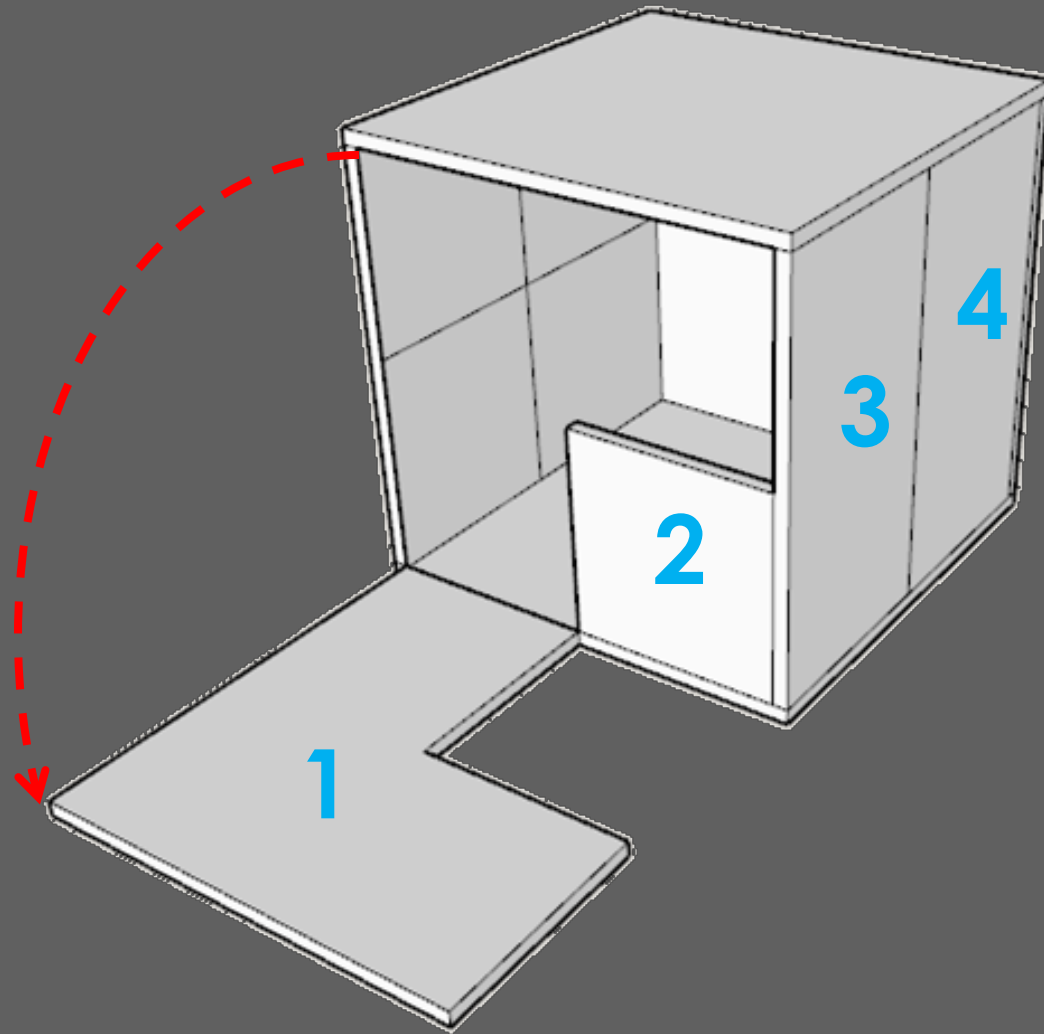
RECONOCEMOS LOS PANOS

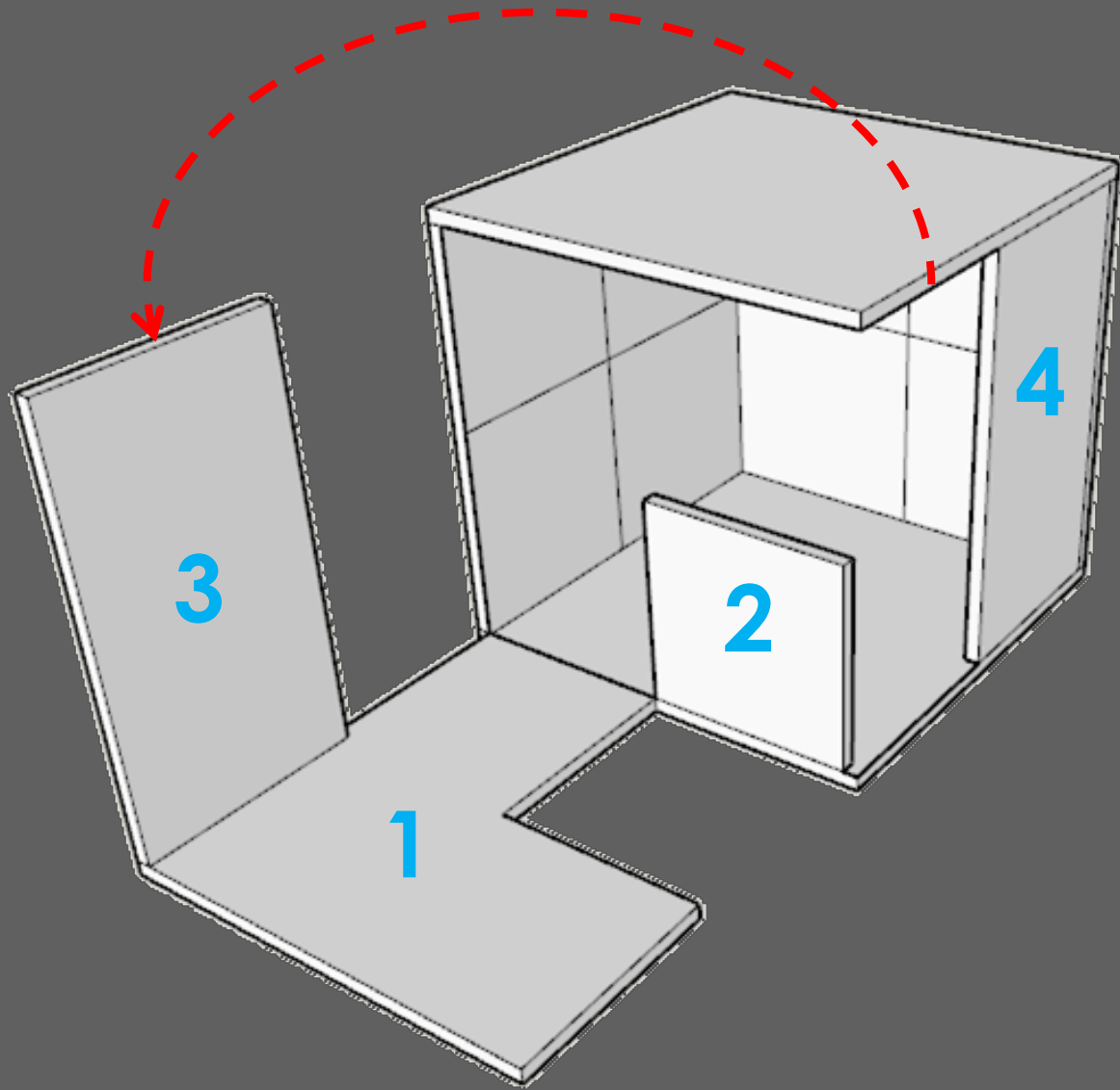


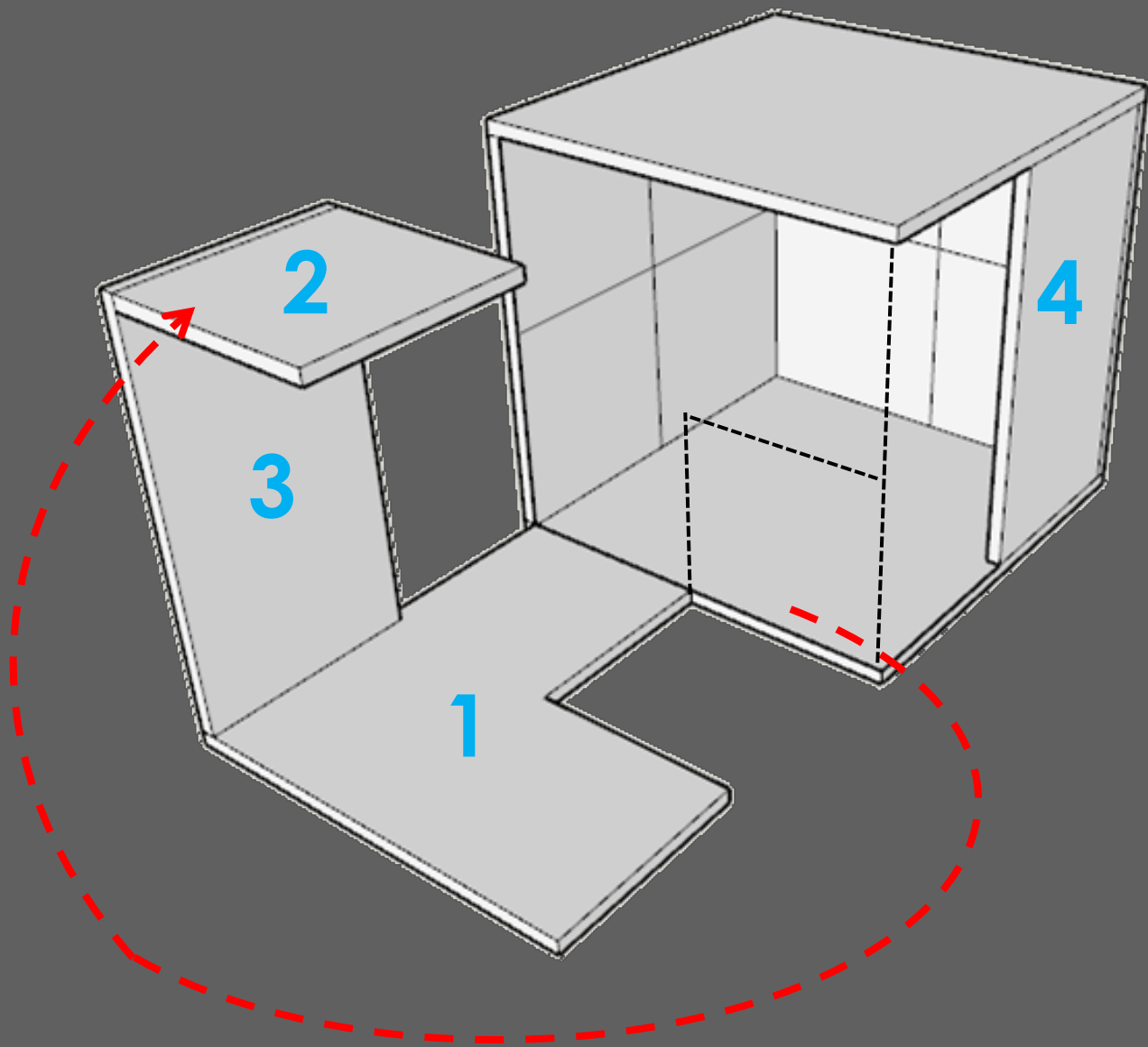
DECIDIMOS PLANOS A MOVER

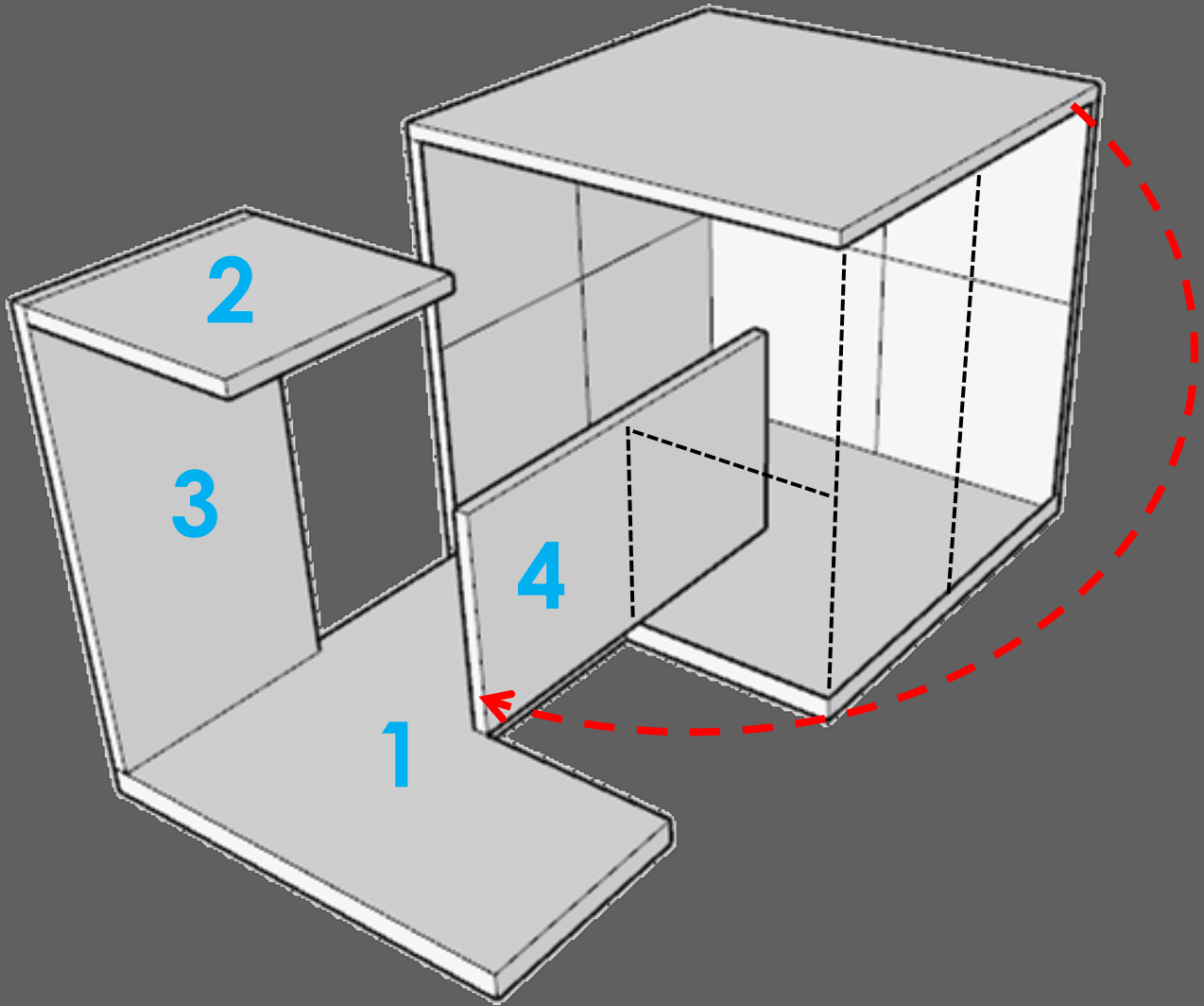


GIRAMOS PLANOS Y CAMBIAMOS DE LUGAR

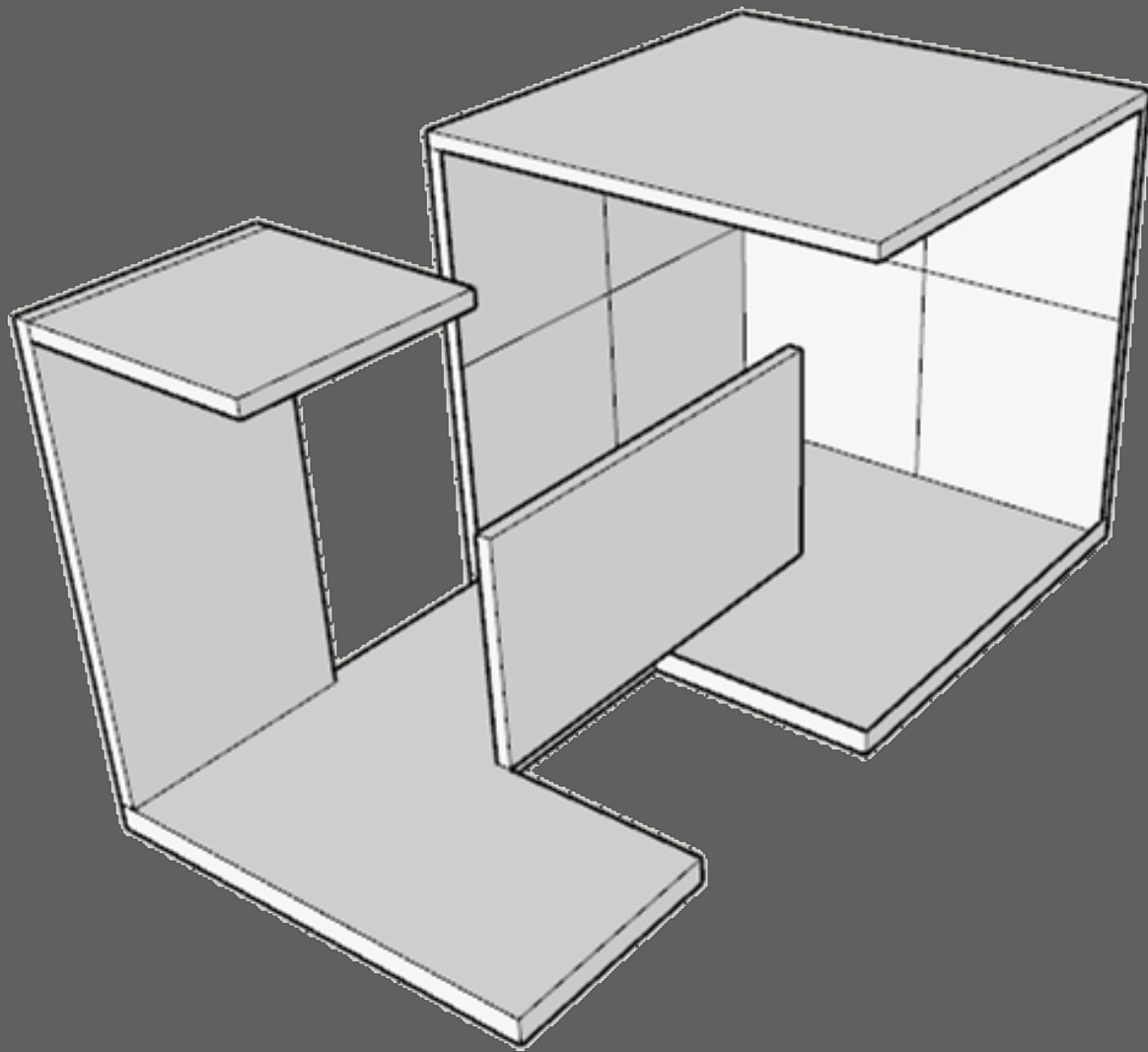




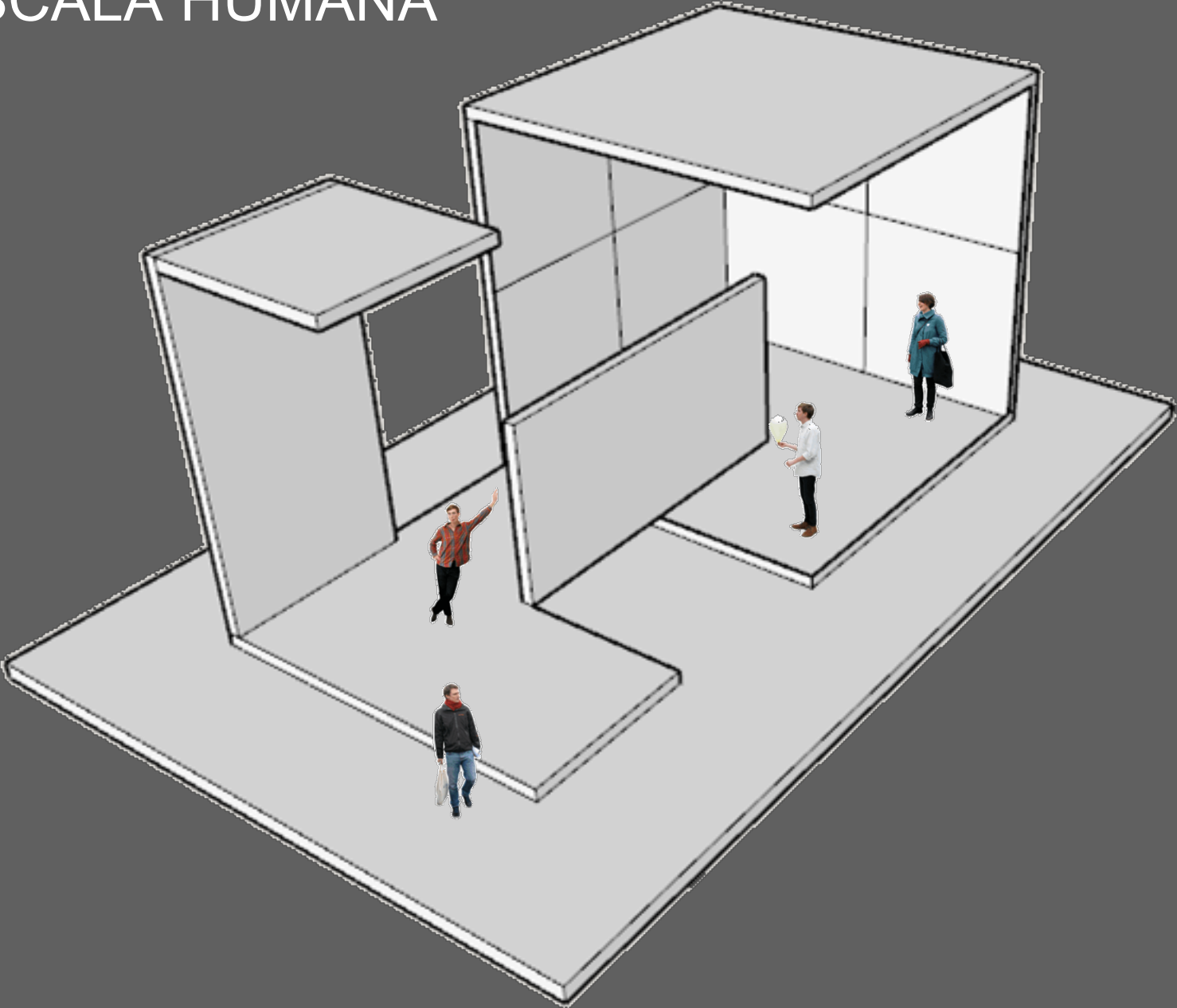




OBJETO TERMINADO



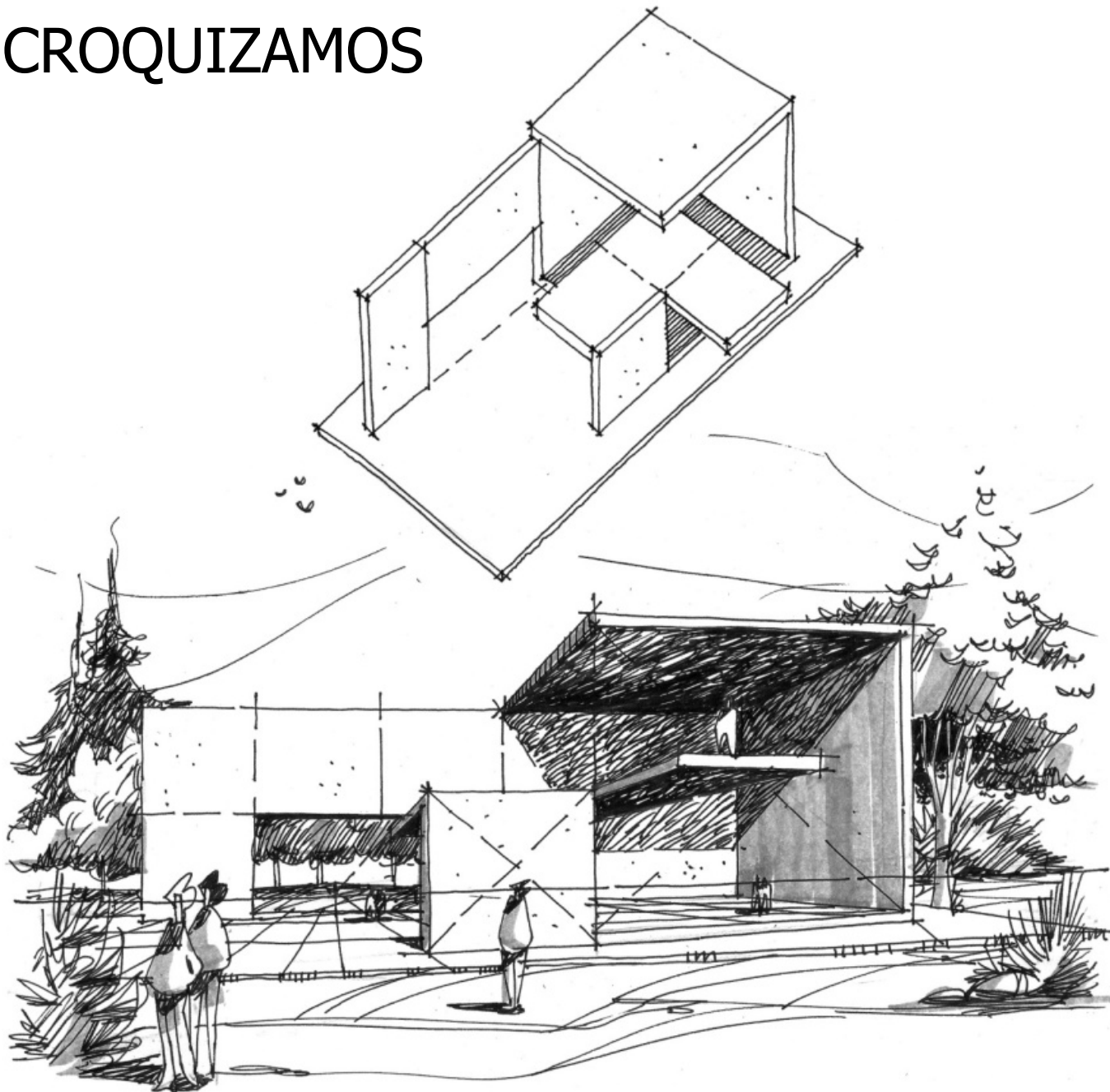
ESCALA HUMANA



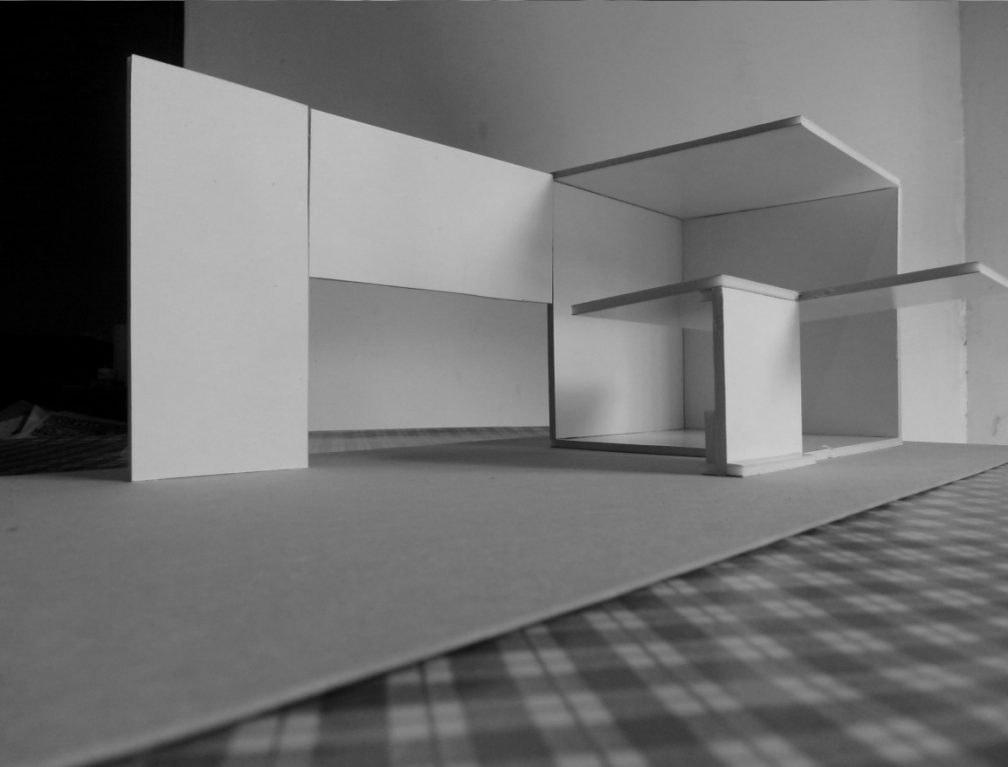
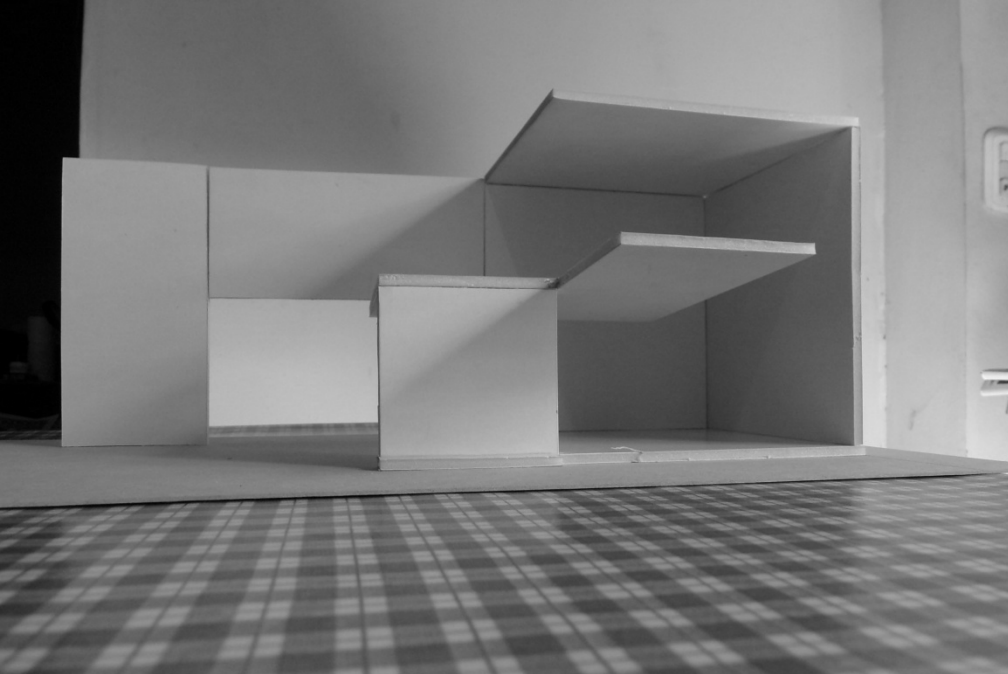
AMBIENTACION



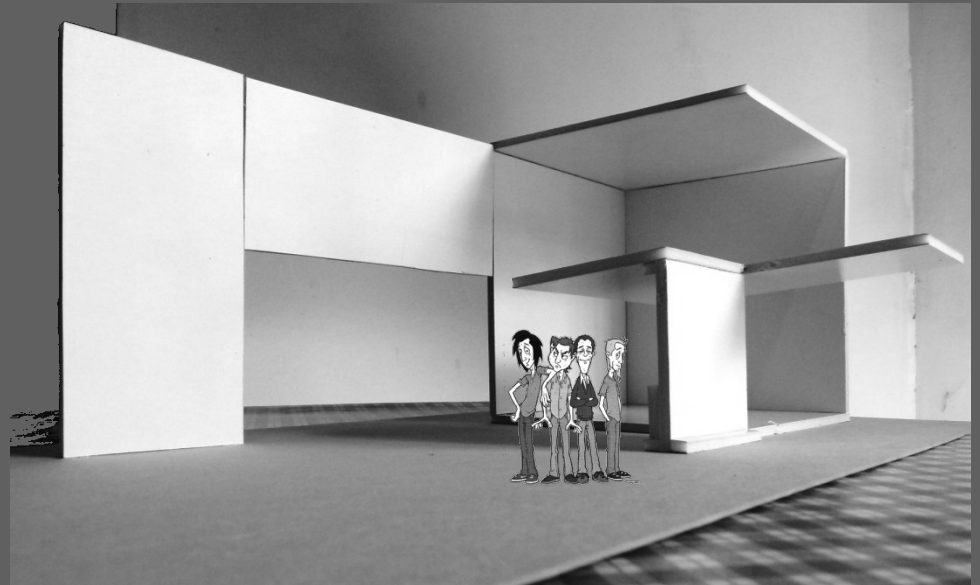
CROQUIZAMOS

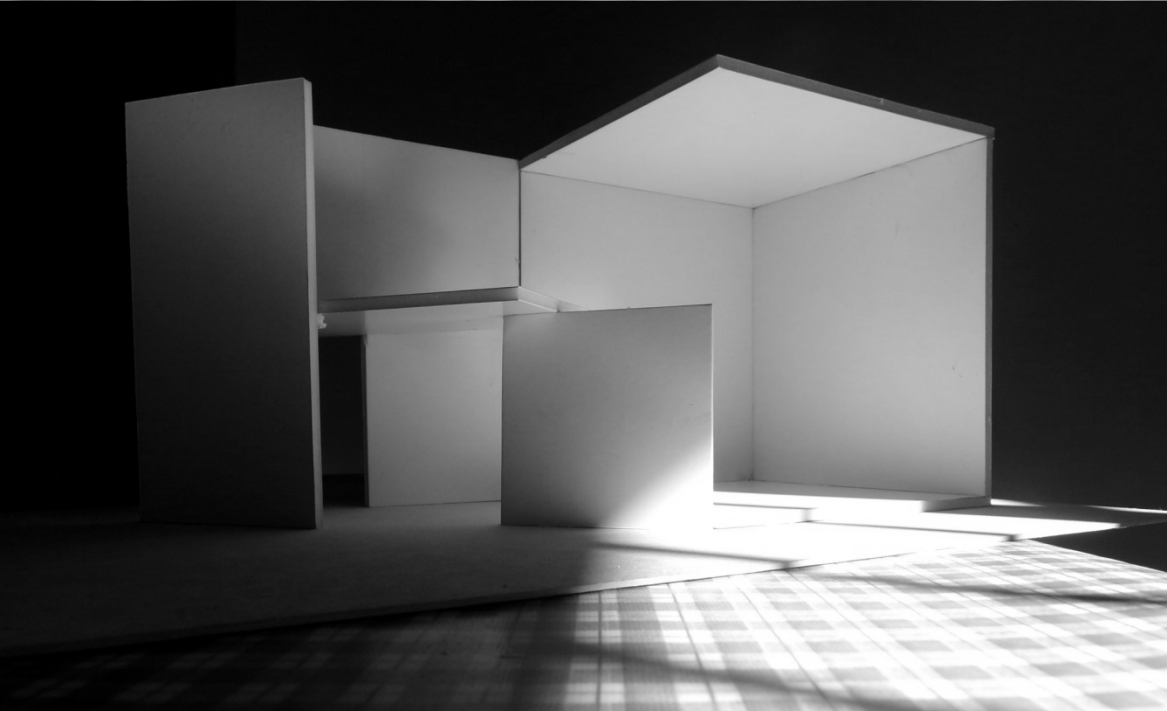
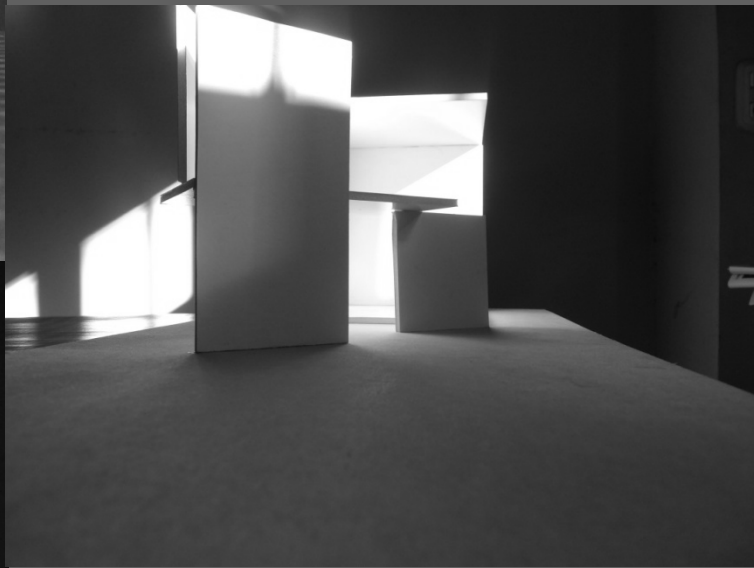
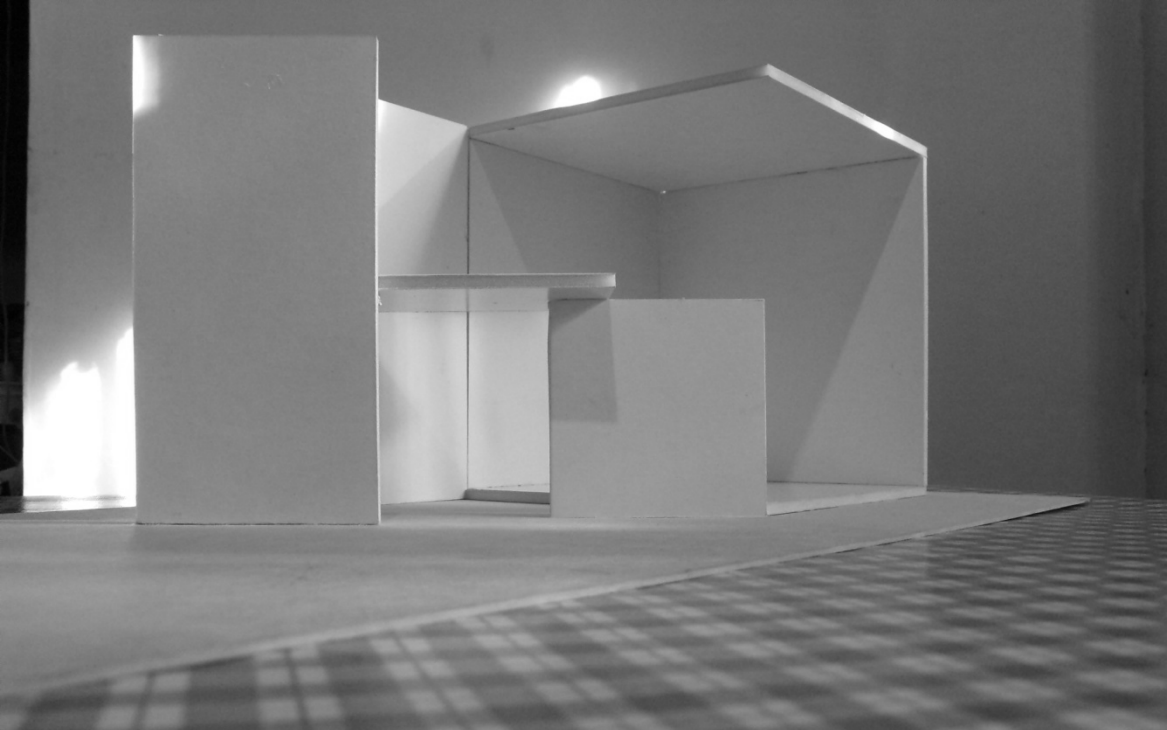


FOTOS DE LA MAQUETA

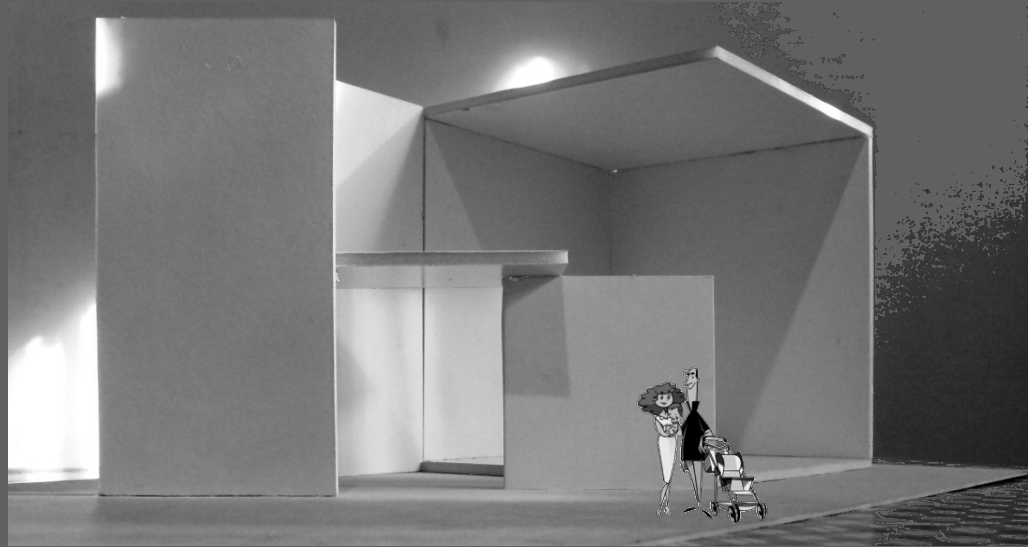


Secuencia de Fotos de la Maqueta

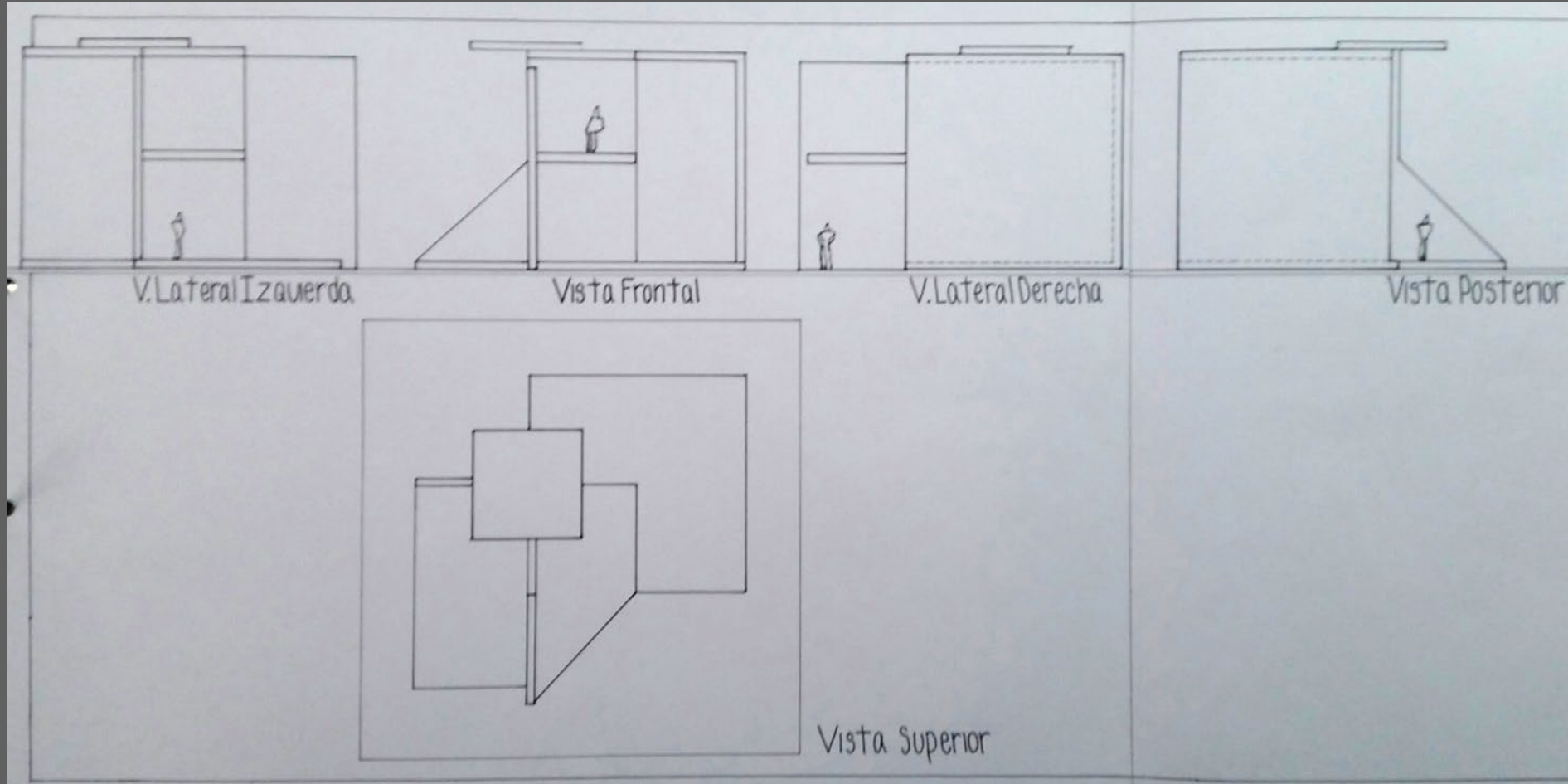




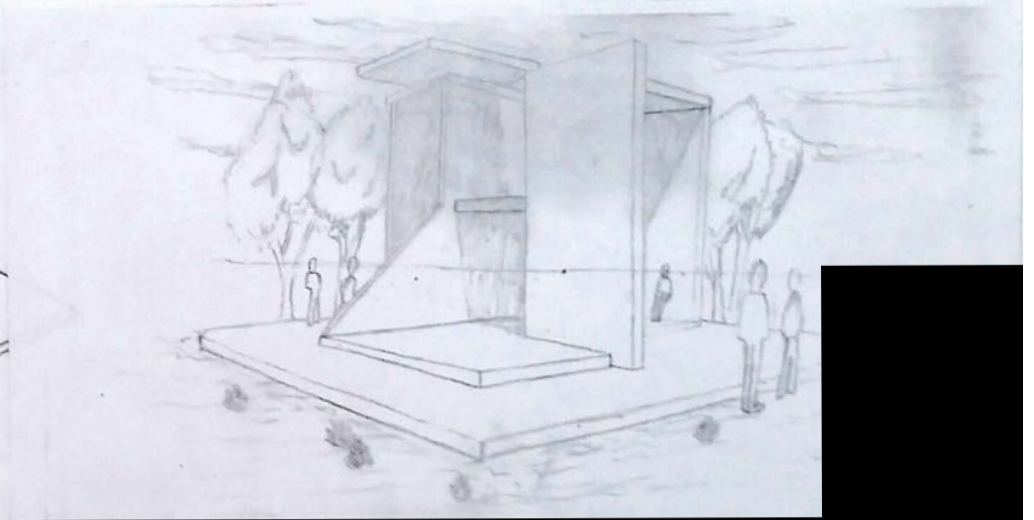
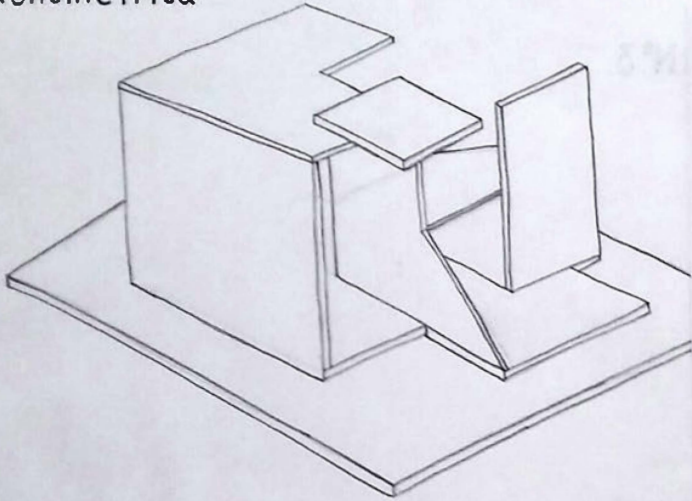
Secuencia de Fotos de la maqueta con escala humana



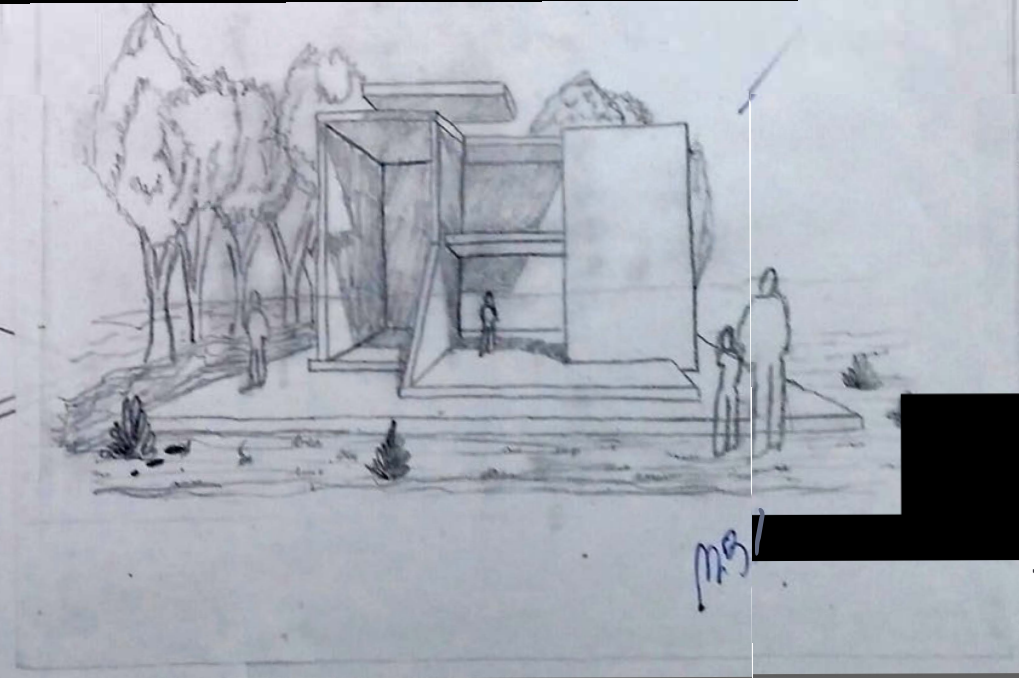
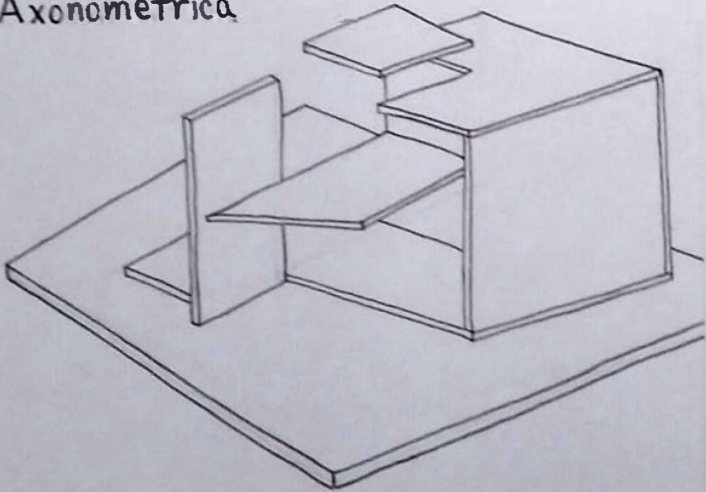
Dibujamos lo que vemos de nuestro objeto

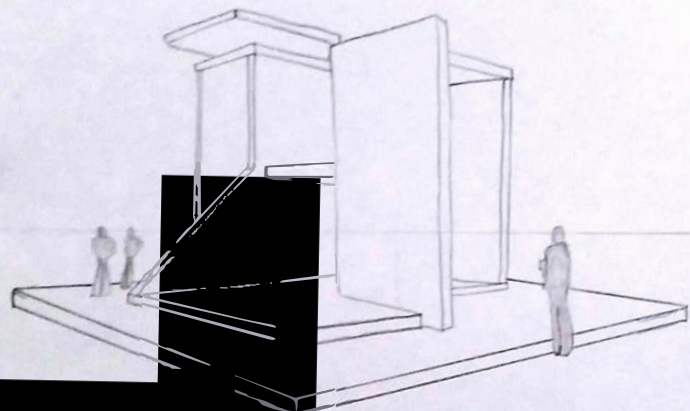


Axonometrica

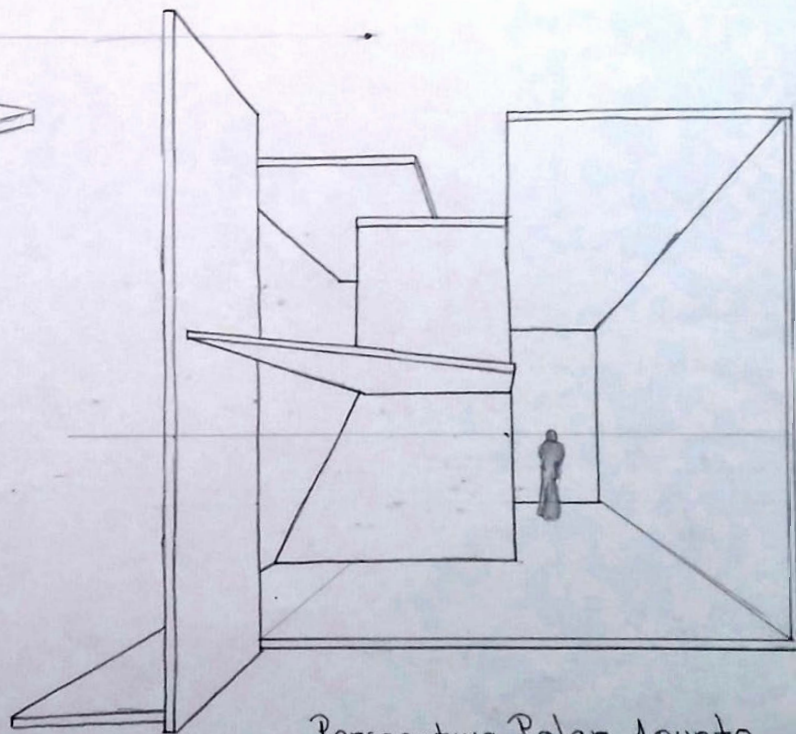


Axonometrica





Perspectiva Polar 2 puntos



Perspectiva Polar 1 punto.